

# In Demand Technology Careers

## COMPUTER USER SUPPORT SPECIALIST

## COMPUTER PROGRAMMERS



### EDUCATION



High school diploma or equivalent required. Postsecondary non-degree award preferred.

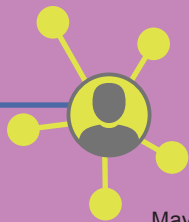
Typically a bachelor's degree; however, some have an associate's degree.



### IMPORTANT QUALITIES

- Critical thinking
- Active listening
- Problem Solving
- Dependability
- Attention to detail
- Cooperation
- Analytical thinking
- Integrity
- Stress tolerance

- Analytical skills
- Concentration
- Detail oriented
- Problem-solving skills



### WHAT THEY DO

Provide Technical assistance to computer users. Answer questions or resolve computer problems for clients in person, via telephone, or electronically. May provide assistance with use of computer hardware and software.

Computer programmers write and test code that allows computer applications and software programs to function properly.



### EMPLOYMENT OPPORTUNITIES

**MEDIAN HOURLY WAGES** \$20.30 TO \$29.07

Employment of computer user support specialists is projected to grow 3.7 percent from 2018 to 2028. With a projected 420 openings in the area.

**MEDIAN HOURLY WAGES** \$21.68 TO \$39.28

Job prospects will be best for programmers with bachelor's degrees or higher and a knowledge of several programming languages. Continued learning in the area enhances job prospects.

*These jobs are in demand in Southwest and South Central Minnesota and these are SW/SC Minnesota Median wages. Data collected from Department of Employment and Economic Development.*



### WORK ENVIRONMENT

Most computer support specialists have full time work schedules. However, many do not work typical 9-to-5 jobs. Many support specialists must work nights or weekends.

Computer programmers normally work alone, but sometimes work with others on large projects. Most work full time and many work from home.



A proud partner of the  
**americanjobcenter**  
network

**SOUTHWEST MINNESOTA PRIVATE INDUSTRY COUNCIL**

**SOUTH CENTRAL WORKFORCE COUNCIL**

**CareerForce**  
*It's your state of success*

Equal Opportunity Employer and Program Provider - Upon request the information in this document can be made available in alternative formats for people with disabilities by contacting Kelly Rickert at [krickert@swmpic.org](mailto:krickert@swmpic.org) or 507-706-1600