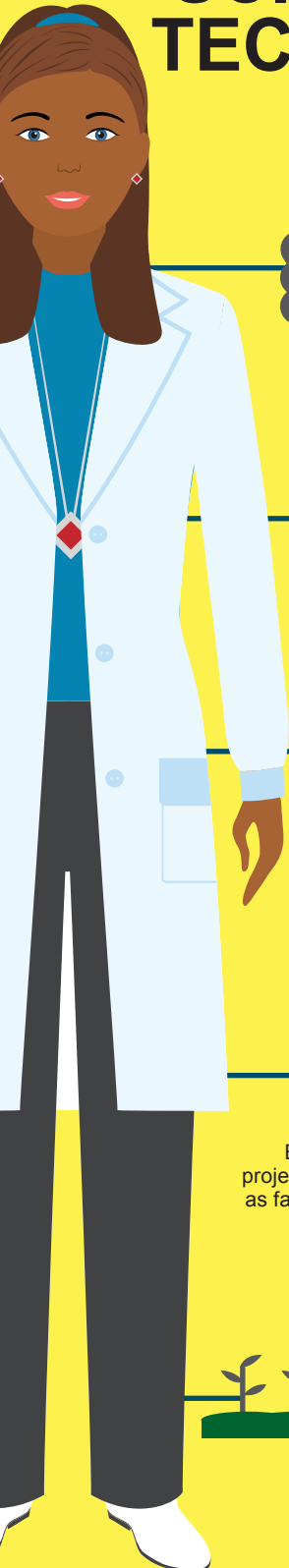
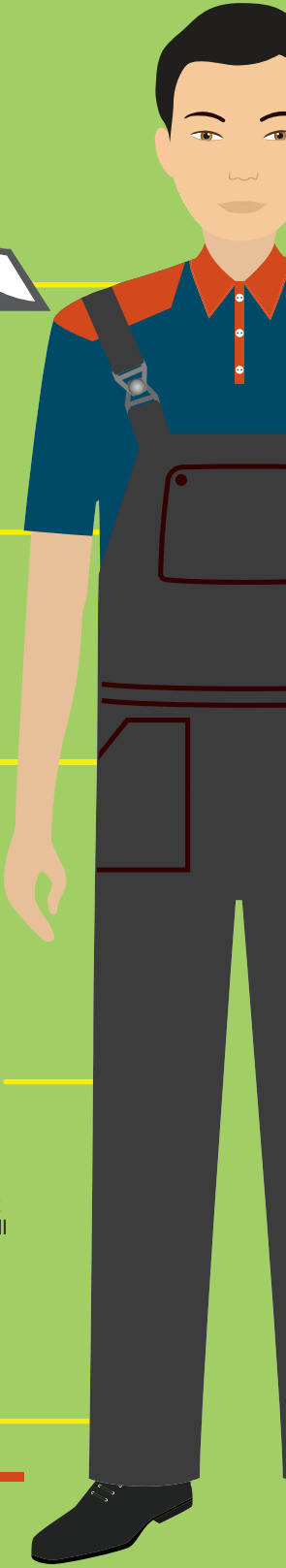


In Demand Agricultural Careers

FOOD SCIENTISTS AND TECHNOLOGISTS



DIESEL MECHANIC



EDUCATION



An associate's degree in biology, chemistry, crop or animal science, or a related field. Some positions may require a bachelor's degree.



High school diploma or equivalent. Completion of postsecondary training programs in diesel engine repair and industry certification preferred.

IMPORTANT QUALITIES



- Analytical skills
- Communication skills
- Critical-thinking skills
- Interpersonal skills
- Physical stamina



- Customer-service skills
- Detail oriented
- Dexterity
- Mechanical skills
- Organizational skills
- Physical strength
- Troubleshooting skills

WHAT THEY DO



Use chemistry, microbiology, engineering, and other sciences to study the processing and deterioration of foods; analyze food to determine levels of vitamins, fat, sugar, and protein; discover new food sources; research making processed foods safe, palatable, and healthful; and apply food science knowledge to determine best ways to process, package, preserve, store, and distribute food.



Inspect, repair, and overhaul buses and trucks, or maintain and repair any type of diesel engine. Consult with customers, read work orders, and determine work required. Perform basic care and maintenance, including oil changes and tire rotations, read and interpret diagnostic test results to identify problems, and repair or replace worn parts.

EMPLOYMENT OPPORTUNITIES

MEDIAN HOURLY WAGES \$28.60 TO \$40.10

Employment of agricultural and food technicians is projected to grow 9.6 percent from 2018 to 2028, about as fast as the average for all occupations. Demand will continue for research in a large variety of areas.

MEDIAN HOURLY WAGES \$19.06 TO \$28.65

Employment of diesel mechanics is projected to grow 9.6 percent from 2018 to 2028, about as fast as the average for all occupations. As more freight is hauled cross-country more diesel mechanics will be needed to maintain and repair the trucks.

These jobs are in demand in Southwest and South Central Minnesota and these are SW/SC Minnesota Median wages. Data collected from Department of Employment and Economic Development.

WORK ENVIRONMENT



Food Scientists and Technologists usually work under the direction of Agriculture and Food Scientists. They conduct tests and experiments on things like food, fiber, production, processing, and nutrition. They may work to increase the yield of farms.



Diesel mechanics usually work in well-ventilated and sometimes noisy repair shops. Occasionally repair vehicles on roadsides and at worksites. Most work full time and overtime is common.

