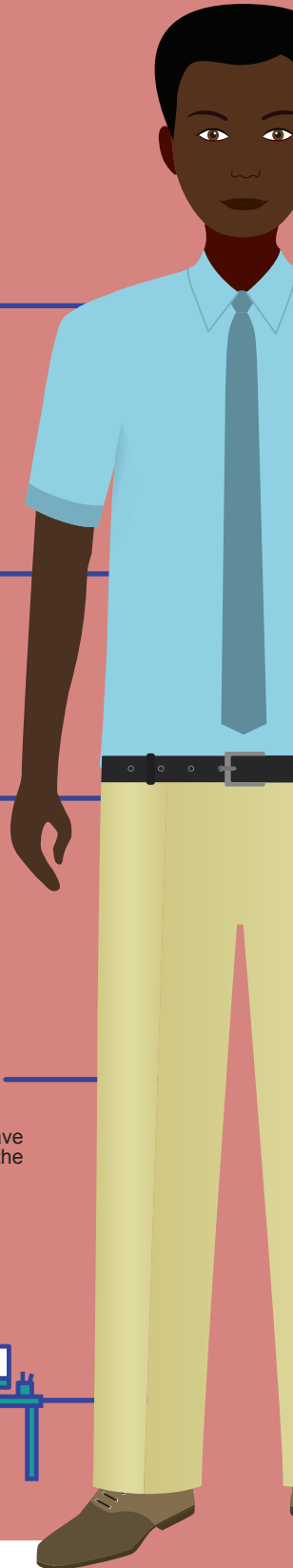
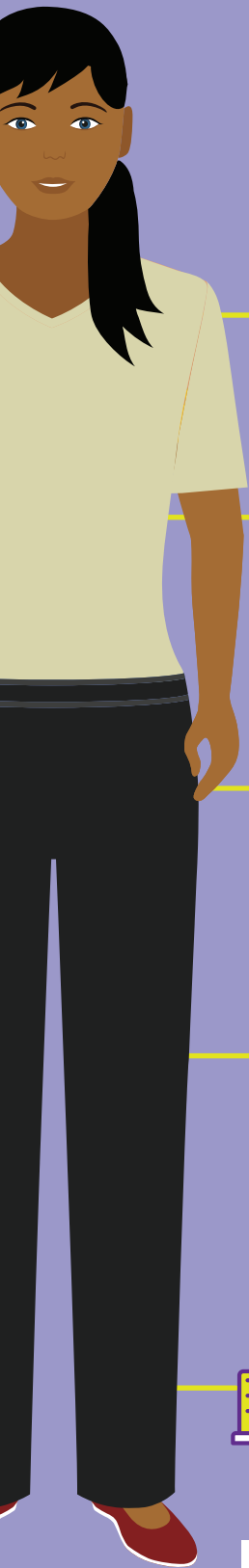


In Demand Education Careers PARAPROFESSIONAL/ TEACHER ASSISTANT

SCHOOL TEACHERS



EDUCATION

In Minnesota, most individuals are required to have a High School Diploma/GED and passed a ParaPro exam or have completed at least two years of study (60 semester credits) at an institution of higher education.



People starting in this career usually have a Bachelor's degree and a teaching license. There are many teacher education programs that can prepare you to teach specific academic subject areas at various education levels.



IMPORTANT QUALITIES

- Active Listening
- Speaking
- Interpersonal Skills
- Patience
- Resourcefulness
- Instructing



- Instructing
- Communication Skills
- Critical Thinking
- Learning Strategies
- Problem Solving Skills
- Decision Making Skills
- Social Perceptiveness
- Coordination



WHAT THEY DO

Reinforce lessons by reviewing materials with students. Tutor students. Follow school rules to teach students proper behavior. Supervise school and student activities. Enforce school policies. Monitor student performance. Collaborate with other teaching professionals.



Plan and teach lessons, assess student's abilities, strengths and weaknesses. Adapt lessons and grade assignments. Apply teaching methods. Establish rules governing student behavior. Monitor student performance.



EMPLOYMENT OPPORTUNITIES

MEDIAN HOURLY WAGES \$12.54 TO \$14.52

Employment of Paraprofessionals is projected to have 3,006 job openings from 2016 to 2026.

MEDIAN HOURLY WAGES \$23.99 TO \$25.16

Employment of School Teachers is projected to have 1,419 openings from 2016 to 2026. This includes the demand due to replacement (workers leaving the occupation or retiring) as well as growth.

These jobs are in demand in Southwest and South Central Minnesota and these are SW/SC Minnesota Median wages. Data collected from Department of Employment and Economic Development.

WORK ENVIRONMENT

Paraprofessionals typically work in schools or childcare centers. Some teacher assistants work part time and many do not work during the summer. Frequently working in a group or team.



Teachers typically work in classroom settings at the school. School teachers generally work during school hours when students are present. Many teachers work a traditional 10-month school year with a 2 month summer break.



A proud partner of the
americanjobcenter
network

**SOUTHWEST MINNESOTA
PRIVATE INDUSTRY COUNCIL**

**SOUTH CENTRAL
WORKFORCE
COUNCIL**

CareerForce
It's your state of success

Equal Opportunity Employer and Program Provider - Upon request the information in this document can be made available in alternative formats for people with disabilities by contacting Kelly Rickert at krickert@swmpnic.org or 507-706-1600.