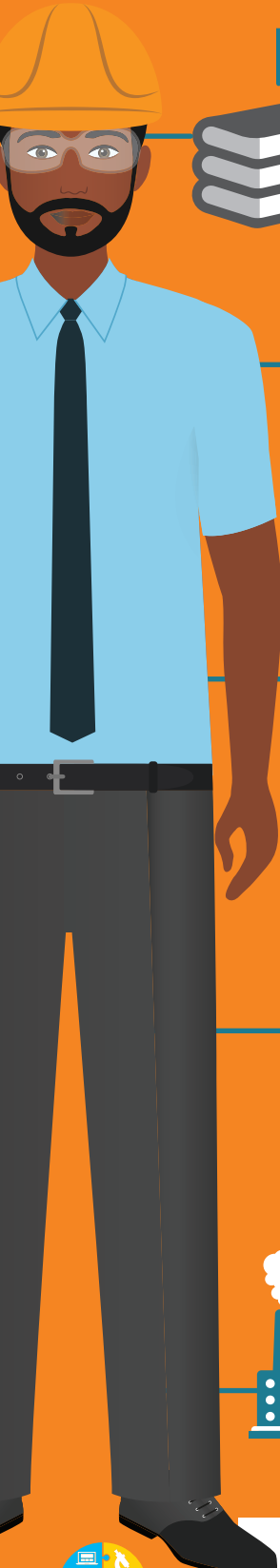


In Demand Manufacturing Careers

MECHANICAL ENGINEERING TECHS

INDUSTRIAL ENGINEERS



EDUCATION

Most employers prefer to hire candidates with associate's degrees or other postsecondary training in mechanical engineering technology.

Industrial Engineers typically need a bachelor's degree in mechanical engineering or mechanical engineering technology.



IMPORTANT QUALITIES



- Project Management
- Work independently
- Manufacturing process
- Problem solving
- Troubleshooting
- Process Improvement
- Risk Management
- Detail oriented
- Creativity

- Project Management
- Problem solving
- Data Analysis
- Product development
- Work independently
- Management skills

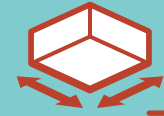


WHAT THEY DO



Mechanical engineering technicians help mechanical engineers design, develop, test, and manufacture mechanical devices, including tools, engines, and machines. They may make sketches and rough layouts, record and analyze data, make calculations and estimates, and report their findings

Develops and documents the required parameters for machines and tools used to produce products. Analyze problems to see how mechanical and thermal devices might help solve a particular problem. Investigate equipment failures or difficulties to diagnose faulty operation and to recommend remedies. Analyze the test results and change the design or system as needed. Oversee the manufacturing process for the device



EMPLOYMENT OPPORTUNITIES

MEDIAN HOURLY WAGES \$14.00 TO \$26.38

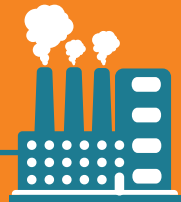
Employment of industrial machinery mechanics and machinery maintenance workers is projected to grow 6.3 percent from 2018 to 2028

MEDIAN HOURLY WAGES \$31.95 TO \$45.18

Employment of industrial engineers is projected to grow 6.2 percent from 2018 to 2028.

These jobs are in demand in Southwest and South Central Minnesota and these are SW/SC Minnesota Median wages. Data collected from Department of Employment and Economic Development.

WORK ENVIRONMENT



Mechanical engineering technicians assist with manufacturing processes in factories or with development phases in research and development labs before manufacturing takes place.

Industrial Engineers generally work in offices. They may occasionally visit worksites where a problem or piece of equipment needs their personal attention.



A proud partner of the
americanjobcenter
network

**SOUTHWEST MINNESOTA
PRIVATE INDUSTRY COUNCIL**

**SOUTH CENTRAL
WORKFORCE
COUNCIL**

CareerForce
It's your state of success

Equal Opportunity Employer and Program Provider - Upon request the information in this document can be made available in alternative formats for people with disabilities by contacting Kelly Rickert at krickert@swmpnic.org or 507-706-1600